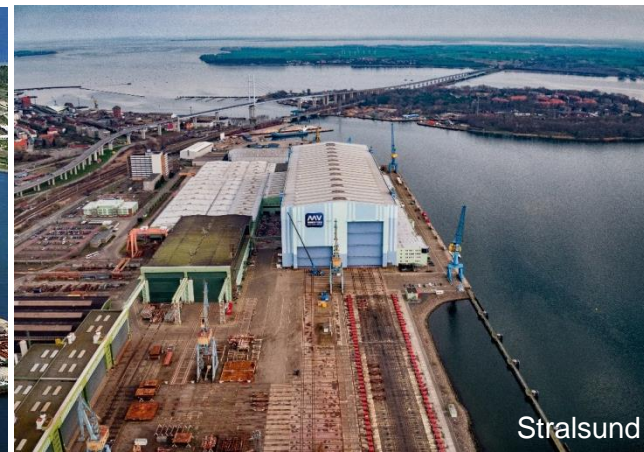


Instruction (short version) Pandemic measures of the MV WERFTEN



Working with Pandemic Conditions - Partnercompany



1. Rules, Entry MV WERFTEN
2. General rules of behaviour
3. Preventive measure at the shipyard (keep distance-hygiene-wear a masks + air exchange)
4. suspected cases, necessary measures!

Avoiding contagion

RULES, ENTRY SHIPYARD



- The new German **Coronavirus-Entry Ordinance** must be observed!
- In order that there is a general obligation to provide proof of evidence for person entering the country:
 - a. Regardless of the mode of transport
 - b. Regardless of whether a previous stay in a high-risk or virus-variant area
- Thus applies: when entering germany every person must have a negative test result, proof of vaccination or proof of recovery!
- The German **Corona Occupational Safety and Health Ordinance** must be observed!
- Thus applies: i.a. prepare a hygiene concept, regular test offers (minmum 2xper week for employees), Coronavirus education, motivation vaccination etc..

The statutory regulations and the regulations at the MV WERFTEN shipyards, in particular the “guideline work under pandemic conditions” must be followed by all employees of our partner companies!

Avoiding contagion

GENERAL RULES OF BEHAVIOUR



KEEP AT LEAST 1,5 M DISTANCE!



WEARING MEDICAL MASKS

HYGIENE



CLEANING



AIR EXCHANGE

MINIMIZE CONTACT



➤ At the shipyard, the obligation to wear a mouth-nose-masks (medical mask) valid in general! Be attention the general rules of behaviour, signs and markings!

➤ **Medical masks must be worn:**

- When passing though the shipyard gates, smoking while passing through the shipyard gates is prohibited – recommendation to wear FFP2 masks without valve!
- Of the ship!
- in the changing areas and toilet facilities - recommendation to wear FFP2 masks without valve!
- Outdoors, if an employees is unable to comply with the distance requirement of 1,5 meters!

➤ If a distance of 1,5 meters is maintained and there is sufficient fresh air supply, the medical mask can be removed directly at the workplace in the office or workshop.

➤ If the minimum distance of 1,5 meters cannot be maintained, employees are required to wear medical masks!

The medical mask must be worn correctly over mouth and nose!

Behaviour in suspected cases

NECESSARY MEASURES



Suspected illness:

- Basically, if I feel sick, contact a doctor. The MV WERFTEN shipyard is not to be entered!

Positive self-test, positive PCR test:

- **No access to the MVW shipyards site - stay directly at home or in your accommodation!**
- Immediate information to your supervisor!
- Supervisor initiation of immediate measures and determination of close contacts!
- Supervisor immediately informs MV WERFTEN in accordance with the Corona reporting chain to Coronameldung@mv-werften.com!

Vielen Dank für Ihre Aufmerksamkeit.

Thank you for your attention.